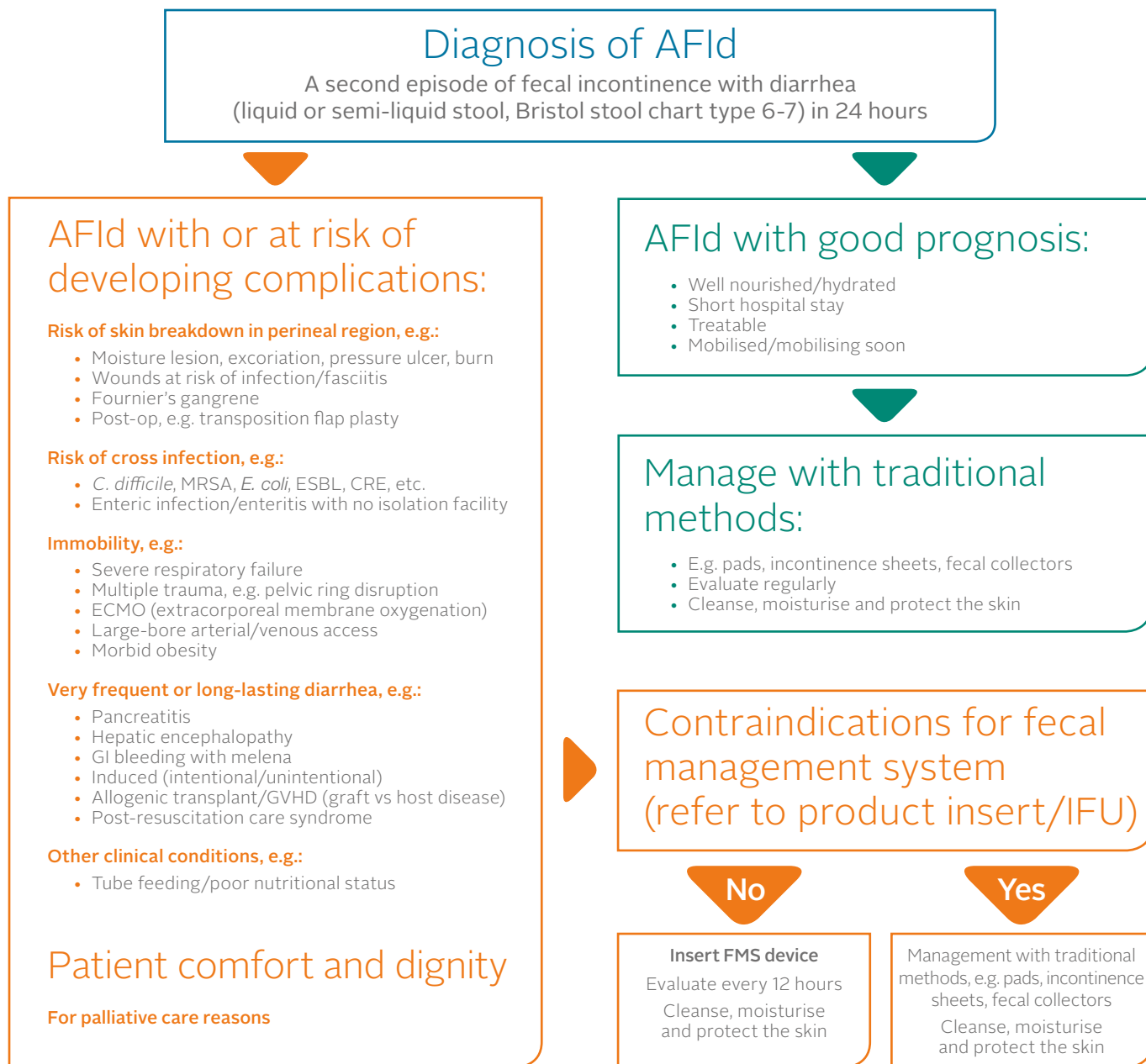


# Expert recommendations for managing acute fecal incontinence with diarrhea in the intensive care unit

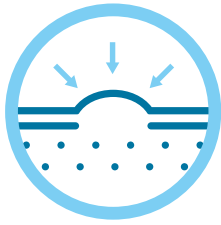
C Bayón García, R Binks, E De Luca, C Dierkes, A Franci, E Gallart, G Niederal, D Wyncoll, P Vaes, B Soderquist, S Gibot. J Intensive Care Soc. 2013;14(Suppl 2):1-9.

## Algorithm for AFId risk assessment and management<sup>1‡</sup>



**AFId:** acute fecal incontinence with diarrhea; **C. difficile:** *Clostridium difficile*; **E. coli:** *Escherichia coli*; **MRSA:** methicillin-resistant *Staphylococcus aureus*; **ESBL:** extended-spectrum beta-lactamase; **CRE:** carbapenem-resistant enterobacteriaceae; **FMS:** fecal management system; **IFU:** instructions for use.

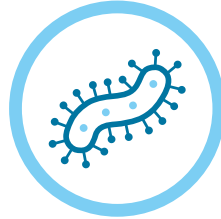
# Acute fecal incontinence with diarrhea is associated with important challenges in the ICU:<sup>1,2</sup>



Skin breakdown and pressure ulcers



Increased hospital stays and cost



Cross-contamination with nosocomial infections

*Experts recommend to implement a standardised protocol for the management of AFI<sup>d</sup> to avoid associated complications<sup>1</sup>*

To learn more, call:

**1-800-422-8811**

Mon-Fri, 8:30 AM - 7:00 PM

[www.convatec.com](http://www.convatec.com)

Flexi-Seal™ PROTECT FMS		
Flexi-Seal™ PROTECT FMS	421630	1kit/box, 1 bag
Flexi-Seal™ Privacy™ Collection Bag with APS Filter	411108	10 bags/box
Flexi-Seal® Fecal Collector		
Flexi-Seal™ Fecal Collector with Hydrocolloid Adhesive*	650078	10 collectors per box

\*When Flexi-Seal™ Fecal Management Systems are not an option

## References

1. Bayón García C, Wyncoll D, De Luca E, Dierkes C, Franci A, Gallart E, Niederal G, Binks R P Vaes, B Soderquist, S Gibot. Expert recommendations for managing acute faecal incontinence with diarrhoea in the intensive care unit. J Intensive Care Soc. 2013;14 (Suppl 2):1-9.
2. Bayón García C, Binks R, De Luca E, Dierkes C, Franci A, Gallart E, Niederal G, Wyncoll D. Prevalence, management and clinical challenges associated with acute faecal incontinence in the ICU and critical care settings: the FIRST cross-sectional descriptive survey. Intensive Crit Care Nurs. 2012;28(4):242-50.

† Reproduced with permission of Stansted News Ltd from 'Bayón García C, Binks R, De Luca E et al. Expert recommendations for managing acute faecal incontinence with diarrhoea in the intensive care unit. JICS 2013;14:Supplement 2, page 6.

™ indicates trademarks of ConvaTec Inc. ConvaTec, the ConvaTec Logo, Flexi-Seal, the Flexi-Seal Logo are registered trademarks of ConvaTec Inc. in the U.S.

The FIRST™ initiative is sponsored by ConvaTec as part of a commitment to better understand and address key challenges in the management of acute fecal incontinence in the critical care setting.